



www.kineticmultisports.com

Event Traffic Control and Safety Plan

Louisa County Triathlon Team,

The purpose of this letter is to request the support of the Louisa County Sheriff's Department and Lake Anna Rescue in providing traffic control, water safety and event support for triathlons to be held at Pleasants Landing on the following dates:

1. Rumpus in Bumpass Triathlon - Saturday April 18, 2026
2. Pleasants Landing Triathlon - Saturday October 10, 2026

The races will take place from 0900-1330. Per our SOP we will have volunteers at each intersection to direct the athletes, so deputies only have to deal with vehicular traffic. There will be a motorcycle leading out the first athlete, following the last, and interspersed throughout the event. There will also be technical support vans driving the course to assist with any mechanical issues the athletes may face. Please remind your deputies that our elite athletes reach speeds up to 30 mph and will need the right of way at intersections throughout the race. To coordinate planning efforts, we have listed out all the positions, times, and direction of travel on the following page.

As always, I sincerely appreciate your support of our events as they would not be possible without your team of dedicated professionals. If you have any questions or concerns about these events, please do not hesitate to contact me. We look forward to another great year of racing.

Sincerely,

Greg Hawkins
Kinetic Multisports
greg@kineticmultisports.com
336-577-2801

Position and Duty Table

Position	Duty	Time
1 - Entrance to Marina on Eastham / Pleasants	Traffic Control: cars and cyclists exit and re-enter the marina	0900-1230
2 - Eastham / Greene's Corner	Control traffic as cyclists turn right, runners head N/S on Greene's Corner	0900-1330
3 - 2 nd Deputy at Greene's Corner	<i>Eastham closed to Pleasants View</i>	0900-1330
4 - Greene's Corner / Bumpass	Control traffic as cyclists turn right on Bumpass	0900-1200
5 - Bumpass / Kentucky Springs	Control traffic as cyclists turn right on Kentucky Springs	0900-1200
6 - Kentucky Springs / Eastham	Control traffic as cyclists proceed straight on Kentucky Springs	0900-1230
7 - Kentucky Springs / Moody Town	Control traffic as cyclists turn right on Moody Town	0900-1230
8 - Moody Town / Eastham	Control traffic as cyclists turn left on Eastham	0900-1230
9 - Eastham / Pleasants View	<i>Eastham CLOSED both directions from Pleasants View to Greene's Corner</i>	0900-1230
Run Course Turnaround – Spotsylvania	One lane closed for run course, control alternating one way traffic	0900-1330
Sheriffs Dept Water Safety	Boat and 2 Jet Skis	0800-1100
Ambulance and Gator Team at Marina – LARI	Response team for onsite medical emergencies	0800-1330

Race Start Times & Distances

Olympic Triathlon Start – 0900 – 1500 meter swim – 24 mile bike – 10k run

Sprint Triathlon Start – 0930 – 750 meter swim – 12 mile bike – 5k run

First Athlete on Course

First swimmer in the water: 0900

First cyclist on course: 0920

First runner on course: 1015

First finisher: 1030 (Sprint), 1100 (Olympic)

Course Closure Times

Swim course will clear at approximately 1030.

Bike course will clear at approximately 1230.

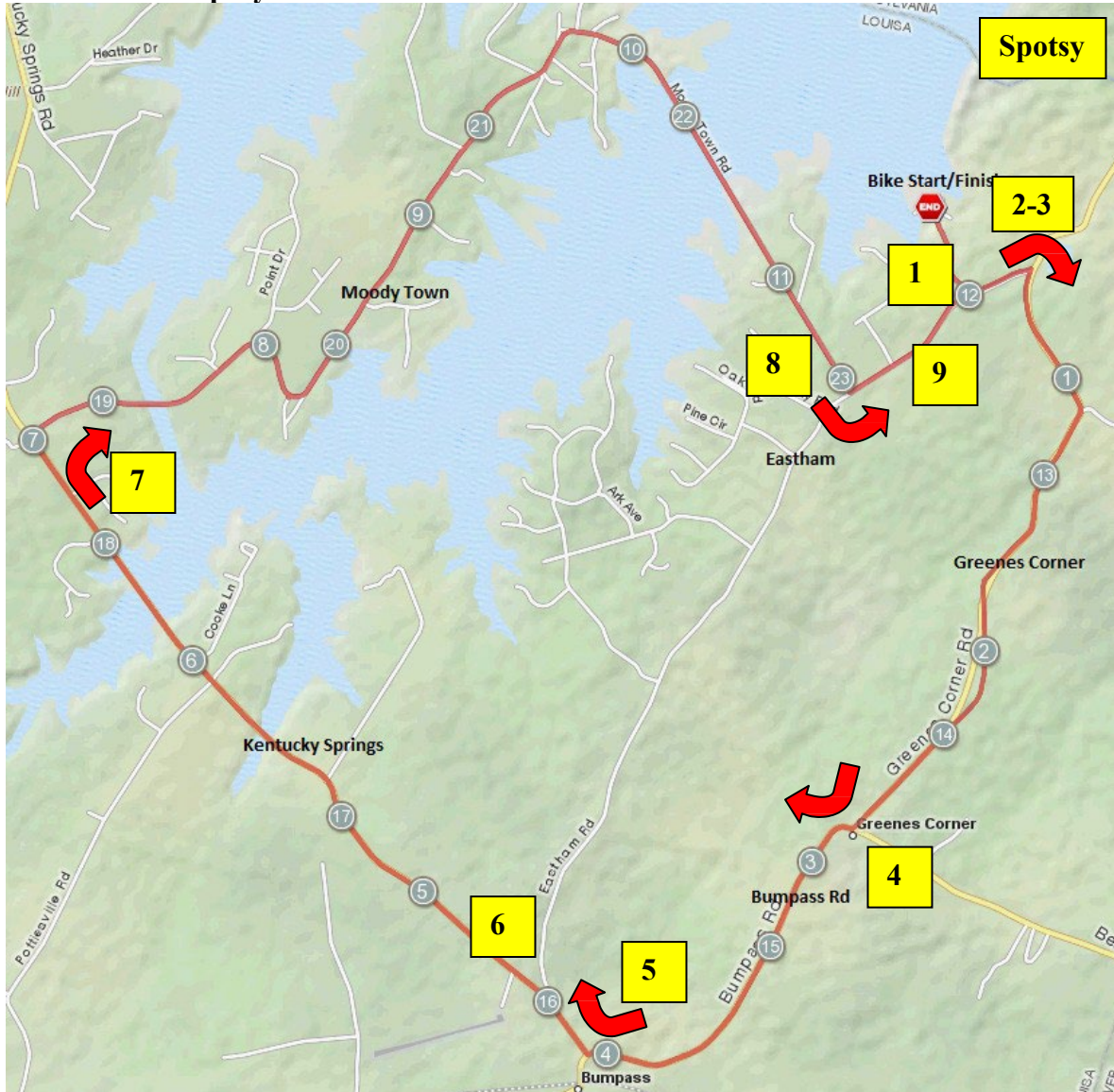
Run course will clear at approximately 1330.

Eastham Through-Traffic Detour

A ¼ mile section of Eastham between Greene's Corner and Pleasants View will be closed to through traffic from 9am – 1230pm.



Bike Course Deputy Locations



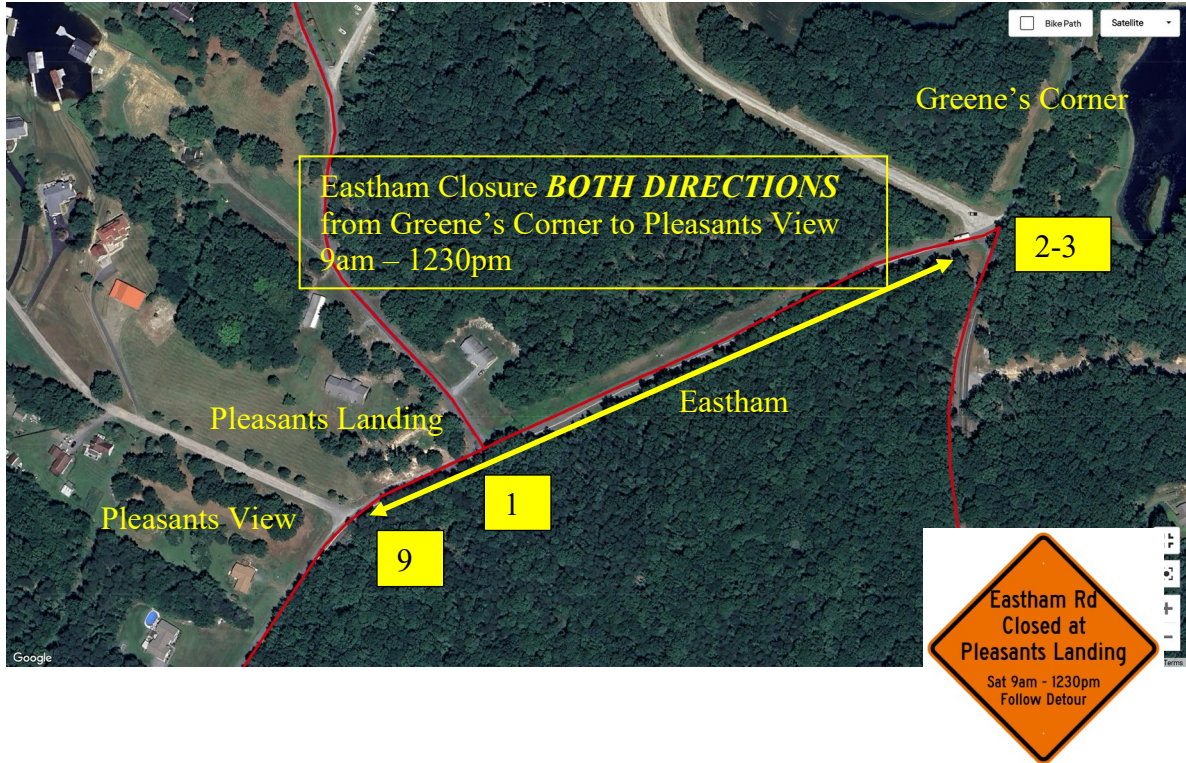
Cyclists will do 1 OR 2 laps of the bike course for 12 OR 24 miles.

Run Course: 6.2 or 3.1 Miles

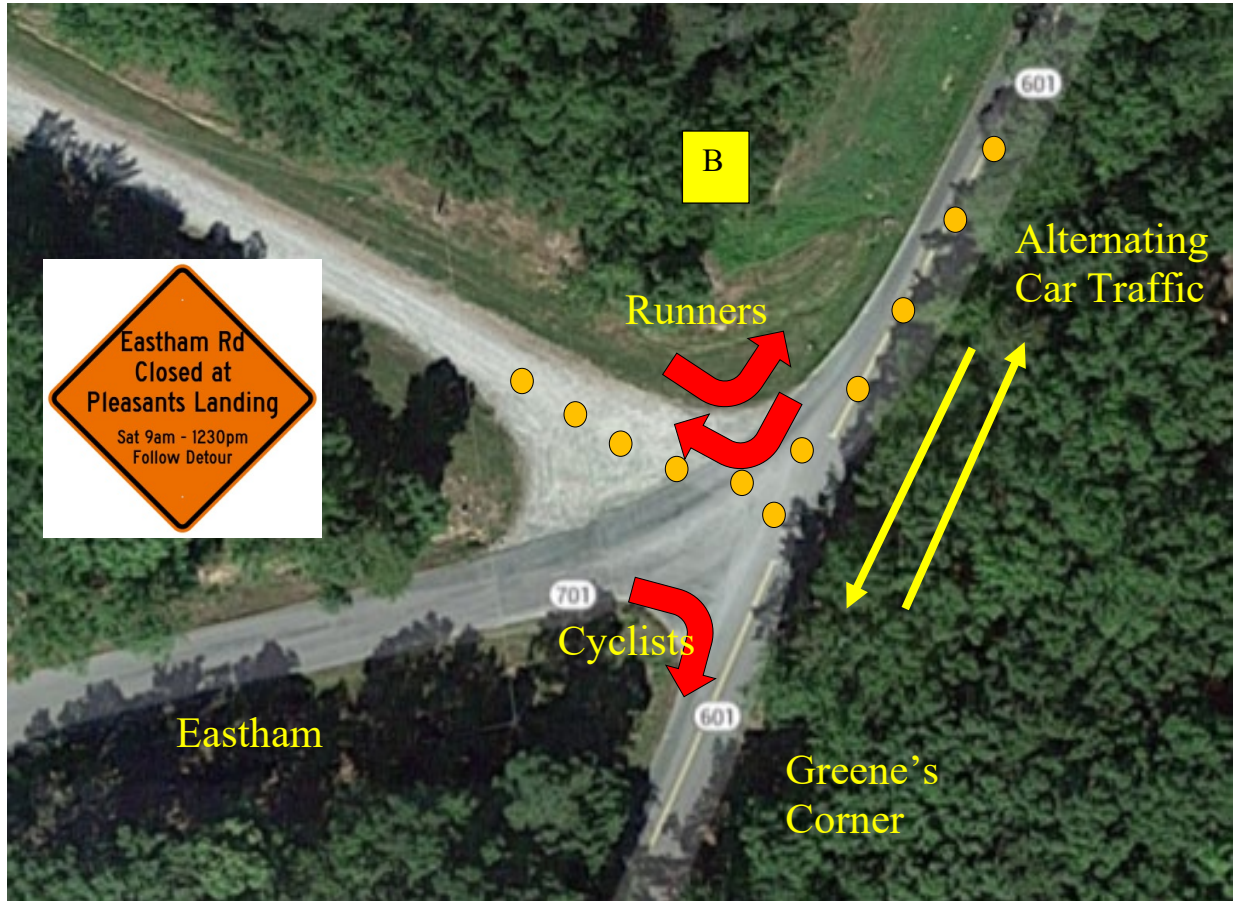


Description: The run course starts and finishes at Pleasants Landing. The run goes through the woods onto the gravel access road to the dam. It then intersects 601 where a lane will be coned off for the runners for approximately 1 mile. A motorcycle will act as a pilot vehicle for alternating one way traffic. Olympic runners will do 2 laps of the course, sprint athletes will do 1 lap.

Road Closure



Run Course: Eastham/Greenes Corner/Dam Access Rd



During the running portion of the event Rt. 601 will be coned to one lane to keep runners on the side closest to the lake. Cars will be held at each end and alternated through with a motorcycle pilot car. This has worked well for 10+ years.